

Sankalp
Grace 3
Glory with Luxury

Sankalp
Grace 3

An exceptional prospect to add
grandeur and glamour to your graceful life,
in the opulent area of town.



Sankalp
Grace 3
Surreal Splendor





Children Play Area



Open Lounge Area

Sankalp Grace 3

Explore elegant ways of enriching live



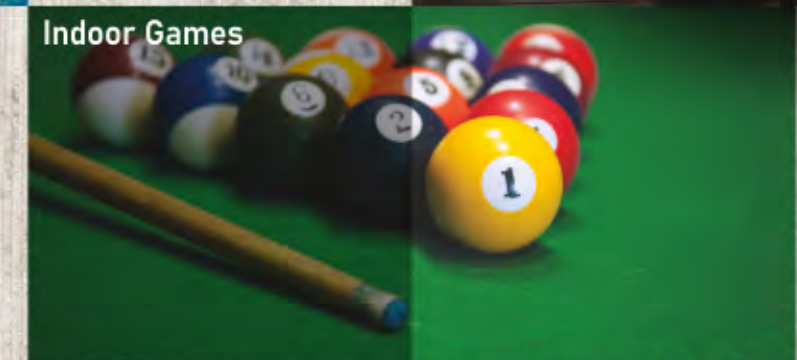
Gymnasium



Indoor Smart Pool



Yoga Room



Indoor Games



24x7 Security



Library



Pickup & Drop Zone



Theater



Badminton & Volleyball Court



Multipurpose Hall



Ample Parking



Walk Way



Party Lawn

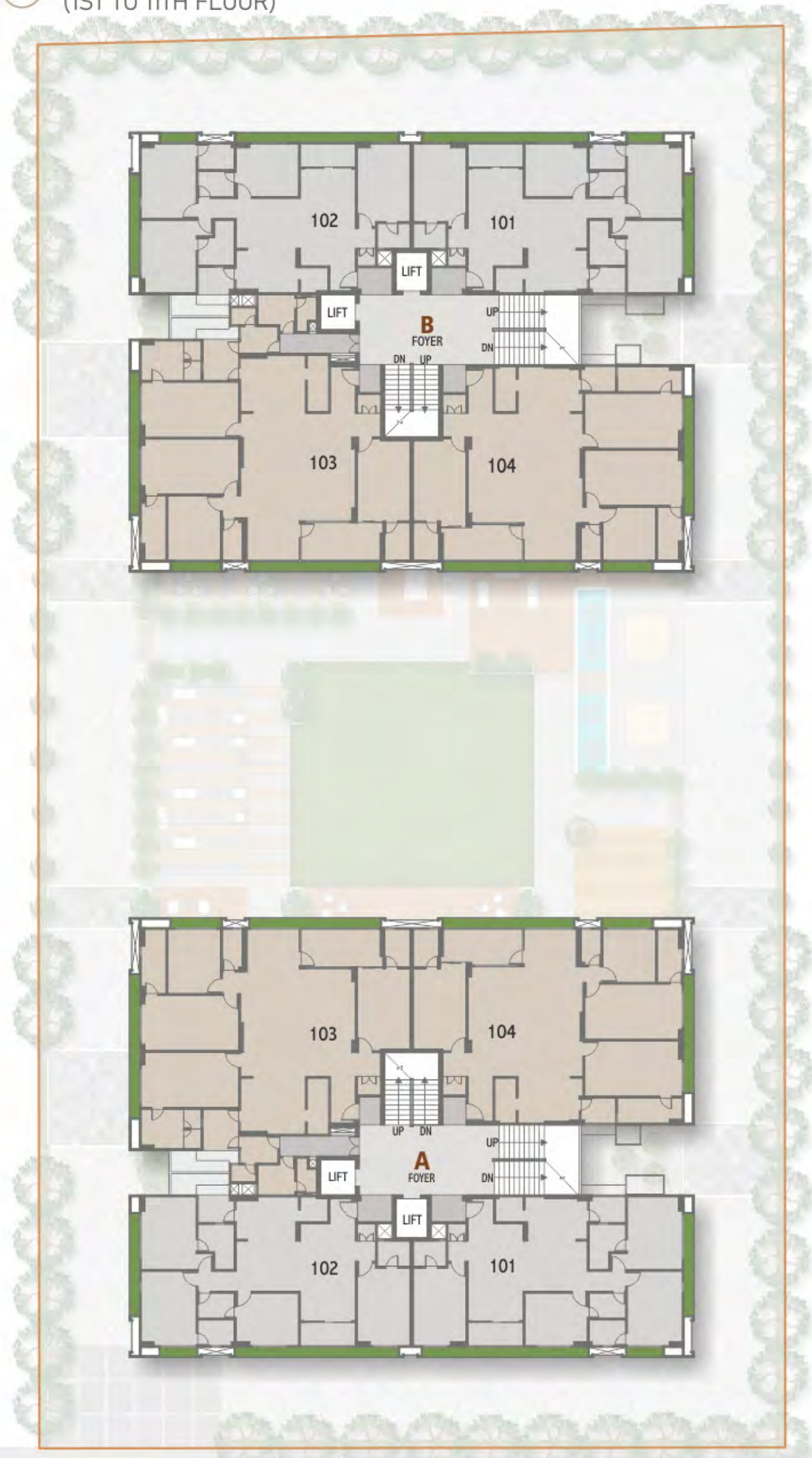
Sankalp Grace 3

GROUND FLOOR



18.00 MT. WIDE ROAD

TYPICAL FLOOR (1ST TO 11TH FLOOR)

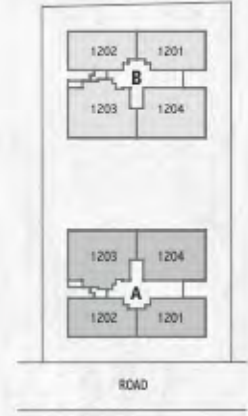


18.00 MT. WIDE ROAD

Sankalp
Grace 3
Magical Magnificence



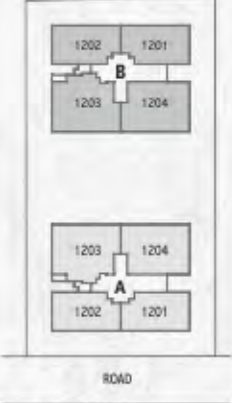
BLOCK-A
UPPER PENT HOUSE



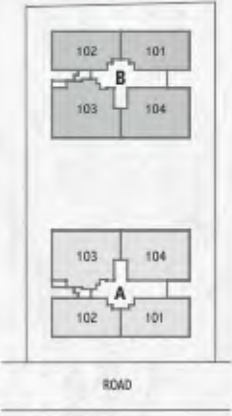


Sankalp
Gravel 3

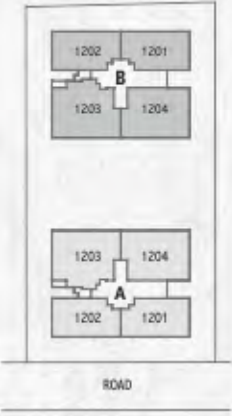
BLOCK-B TYPICAL FLOOR
(2ND TO 11TH FLOOR)



BLOCK-B
LOWER PENT HOUSE



BLOCK-B
UPPER PENT HOUSE



SPECIFICATIONS

FLOORING

- Italian Marble in Vestibule, Drawing, Dining, and Passage area.
- Vitrified tiles in other areas.
- Premium wooden flooring in all bedrooms.
- Vitrified / Granite flooring in Verandah.

KITCHEN

- Granite platform with sink as per design.
- Vitrified tiles dado up to Lintel level.

TOILETS

- Vitrified tiles dado in toilets up to Lintel level.
- Shower cubical in Master Bedroom toilet.
- Branded CP fittings and Sanitary ware in all toilets.

WASH AREA

- Kota stone flooring and Vitrified tiles dado.
- Provision for Washing machine by electrical and plumbing points.

DOORS AND WINDOWS

- Main entrance door — Flush door with both side veneer finish.
- All other doors— Flush door with both side laminate finish.
- Granite window jambs.
- Aluminium sections for windows with DGU glass.

ELECTRICAL

- 3-phase concealed fire resistant copper wiring with adequate points in all areas.
- Branded modular switches.
- Provision for TV, cable, telephone points.
- Provision for Video Door Phone security system.

PLUMBING WORK

- Hydro pneumatic pressurized water supply system.
- Central water softening plant.
- Percolation well as per the norms.
- Good quality plumbing and drainage system using PVC pipes.

HVAC WORK

- Provision for central AC VRF/VRV/HVAC system by providing only concealed piping from outdoor unit duct to proposed indoor locations.

EXTERNAL AND INTERNAL FINISHES

- Double coat mala plaster with texture paint on external surfaces.
- Internal walls finished with Gyproc punning plaster and primer coat.
- Ceilings in exposed concrete without plaster/punning.

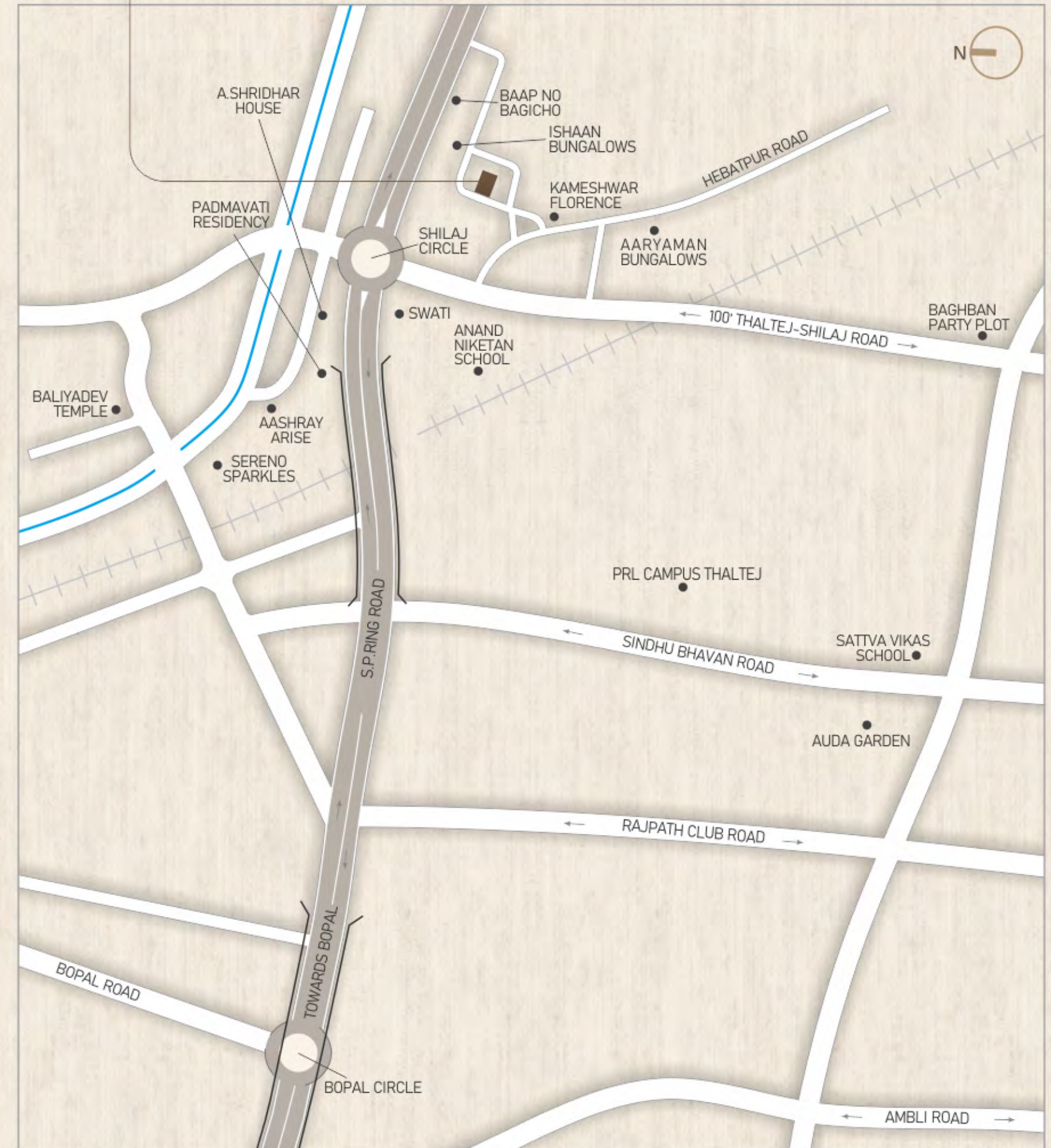


Sankalp Grace 3

Thaltej - Shilaj Road,
Shilaj, Ahmedabad



Scan for location



Special Notes :

The developers reserve the rights to change or revise or make any modifications, additions, omissions or alterations in the scheme as a whole or any part thereof or any details therein, at their sole discretion without any prior notice. Such changes would be binding to all the members.

All the architectural and interior views in brochure are computer graphic simulated interpretation of the actual property.

All the dimensions given are approximate & from unfinished surfaces.

This brochure is just for an easy presentation of the project and should not be treated as a legal document.



Development By:

Sankalp Organisers Pvt. Ltd.

CIN No: U45201GJ2008PTC054733



www.sankalprealty.com



Thaltej - Shilaj Road,
Shilaj, Ahmedabad

+91 99257 67000



+91 76220 67000

+91 99783 50000



info.sankalprealty@gmail.com

Architect



Plumbing and Fire Fighting

Aashir Engineering Pvt. Ltd.

Structure

Bhoomi Consultants

MEP Consultants

Transenergy Pvt. Ltd.

PMC

Shree Ideas Consultants

RERA No.:

RERA Website: www.gujrera.gujarat.gov.in