

ISO 9001:2008 Certified company



Corporate Office:

**Sankalp**  
Organisers Pvt.Ltd.

4th Floor, Sankalp Square, Nr.Manav Mandir, Gurukul Road, Ahmedabad-380 052

Phone: 079-4071000 / 124 | Mobile: 98250 17433 | Fax: 079-27499100 | Mail: [info@sankalporganisers.com](mailto:info@sankalporganisers.com) | Web: [www.sankalporganisers.com](http://www.sankalporganisers.com)

Architect - **pkc**

Homes that match your  
**Dreams**

Sankalp Square

Sankalp Grace

Sankalp Sapphire

Sankalp Grace 2

Sankalp Serenity

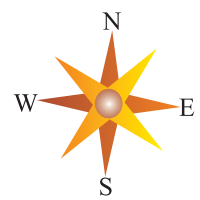
Successful Journey...

Sankalp  
सांदिपनी  
2&3 BHK Elite Apartments



Escape to a world where  
Your Dreams Come True





# Site Plan



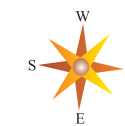
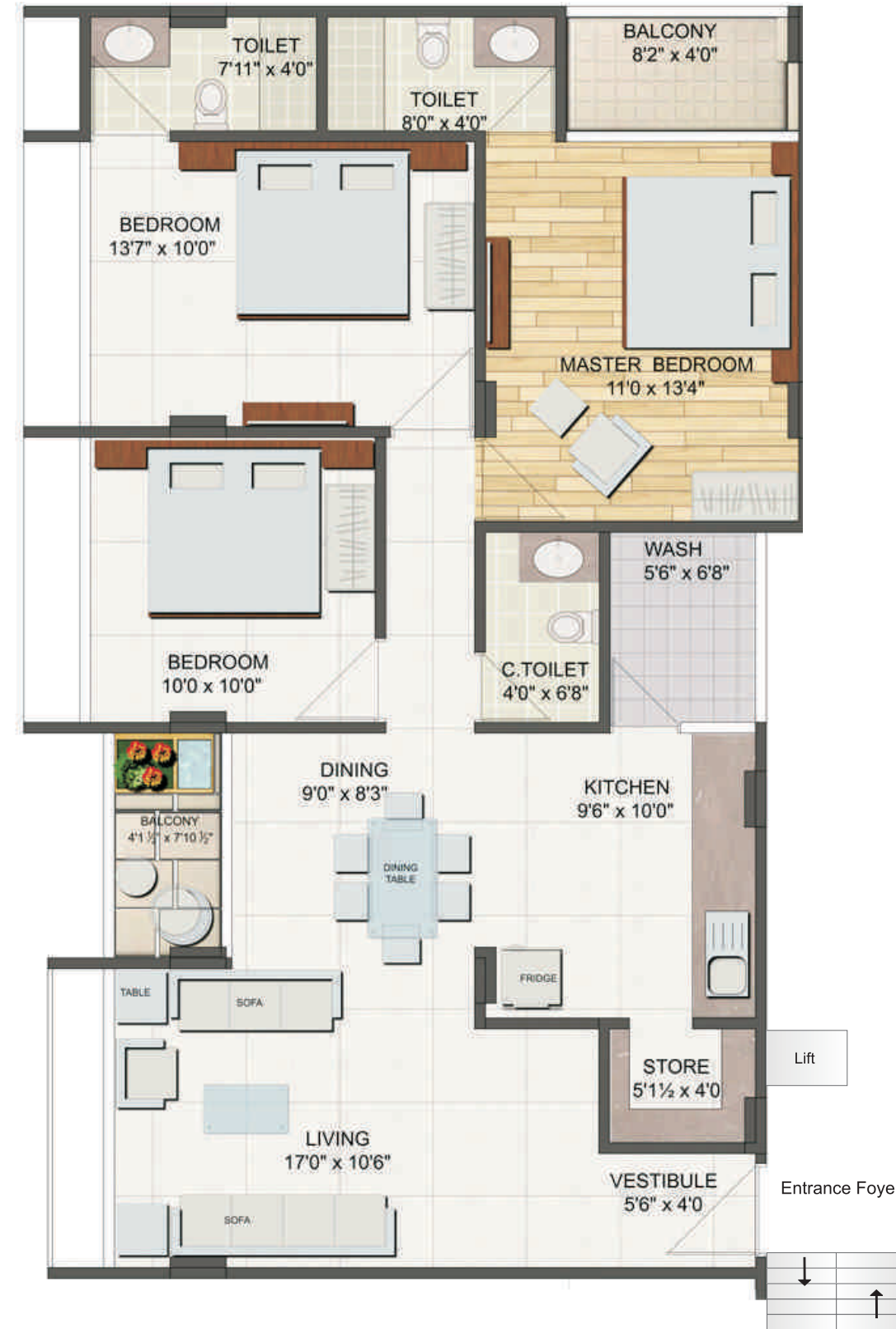
Sankalp  
सांदिपनी

| 40 Spacious Apartments | 2 BHK (20 Units) | 3 BHK (20 Units)  
| 5 Floor | 4 Apartments each floor | Hi-Tech elevator

Block-A & B  
**Unit Floor Plan**  
 2 BHK - 135 Sq. Yds.



Block-A & B  
**Unit Floor Plan**  
 3 BHK - 201 Sq. Yds.



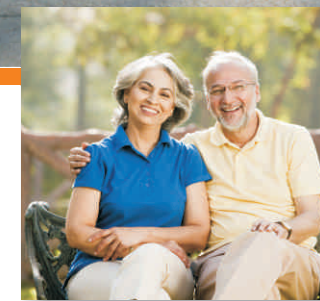
Provision for Terrace development



## Fun Fitness Leisure

### FEATURES

- | Attractive entrance foyer | 24hrs security | Landscaped garden | Children's play area | Senior citizen seat-outs
- | 24hrs water supply with bore well | Allotted car parking in basement & ground Level | Provision for pipe gas supply in each apartment





#### **LIVING/ DINNING / DRAWING ROOM**

Vitrified Tiles – 600 mm x 600 mm  
Walls and ceiling – mala plaster with wall putty  
Main entrance door – 35mm thick flush door with both side veneer / moulded skin door

#### **MASTER BEDROOM**

Vitrified Tiles – 600 mm x 600 mm  
Walls and ceiling - mala plaster with wall putty

#### **BEDROOM**

Vitrified Tiles – 600 mm x 600 mm  
Walls and ceiling - mala plaster with wall putty

#### **KITCHEN**

Ceramic tiles dado on kitchen counter up to 7ft ht.  
with s.s. sink

#### **TOILET**

Designer ceramic tiles on floor and walls  
(upto lintel level), Granite platform  
Jaquar or equivalent bathroom fittings

#### **WINDOWS**

Aluminium sliding windows with stone jamb

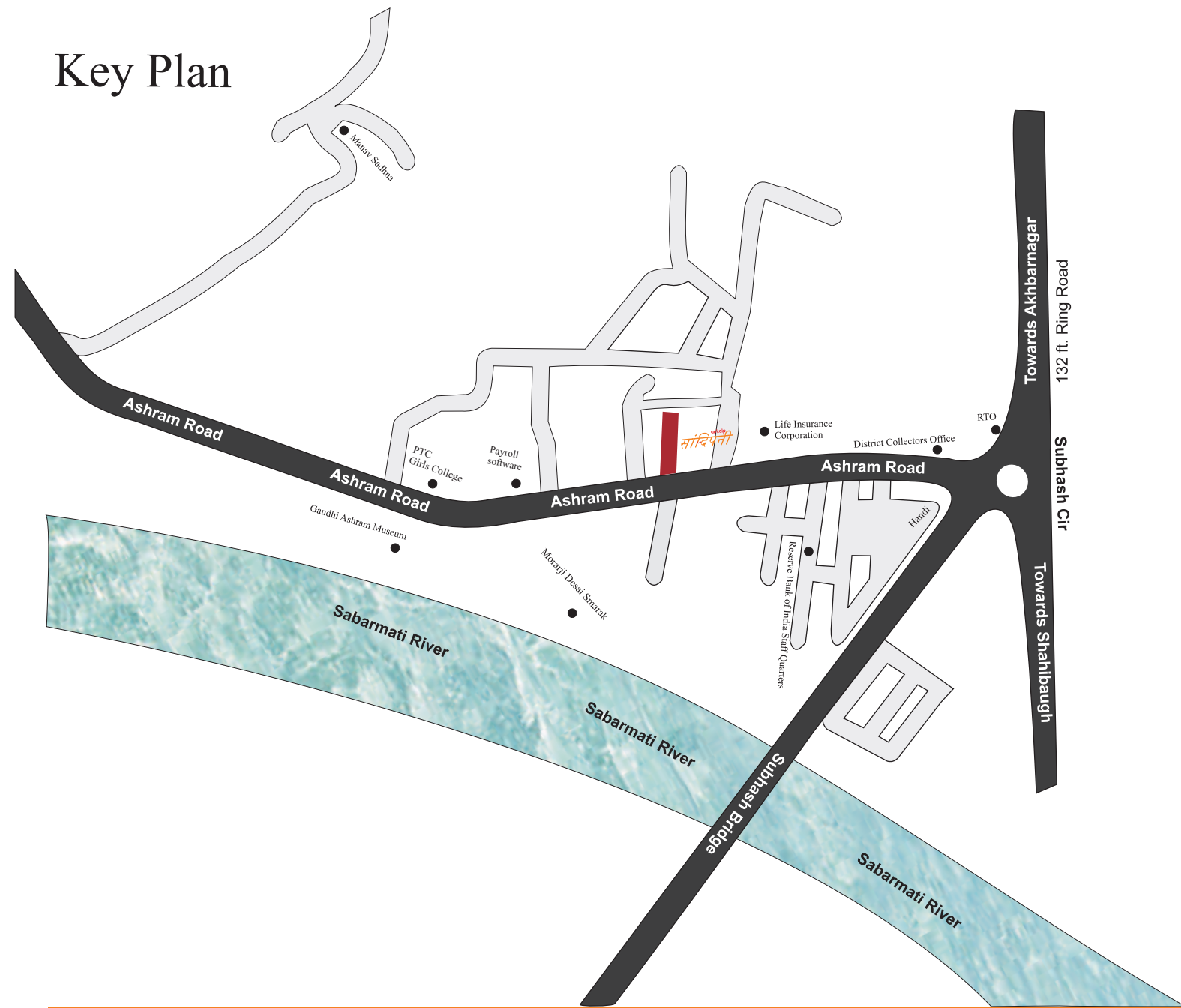
#### **PLUMBING WORK**

CPVC / GI water supply pipes and UPVC pipes for soil,  
waste and drainage system

#### **ELECTRICAL WORK**

Branded modular switches  
3 – Phase concealed FR copper wiring with adequate  
number of points in all rooms

# Key Plan



Airport : 7.0 km  
Bus Station : 0.5 km  
Railway Station : 7.5 km

## Disclaimer

The information contained in this brochure is indicative of the kind of development that is proposed. It is prepared and issued in good faith and is for guidance only. It does not constitute part of an offer or contract. All plans, drawings, facilities are subject to the approval of the respective authorities and would be changed, if necessary and the developers reserve the right to change plan, specifications or features without prior notice or obligations. This brochure is not to be treated as part of legal document and is for an easy display of the project.

